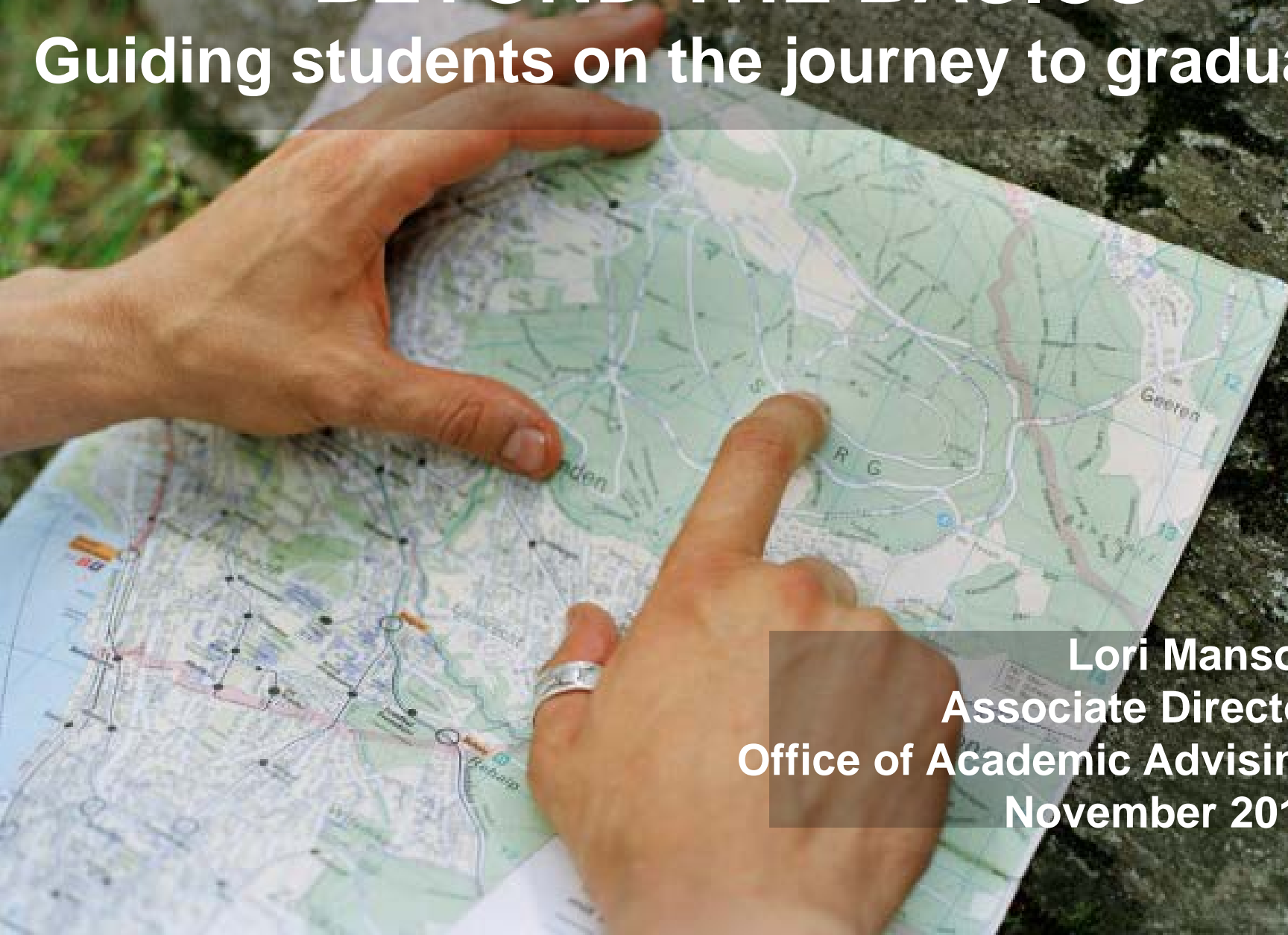


BEYOND THE BASICS

Guiding students on the journey to graduation



Lori Manson
Associate Director
Office of Academic Advising
November 2018



General Education

Electives

Major

**General
Education**

Writing Courses

**Second Language
Courses**

Math/CIS Courses

Groups:
Arts and Letters,
Social Science, Science

Multicultural Courses



How does a course double dip (triple dip)?

DOUBLE DIP =

Satisfies two requirements with a single course

EXAMPLES:

**Group and Multicultural
AAD 250 = AL (>1) and IP**

**Major and Group (ANTH)
ANTH 145 = Major and SCI (>3)**

TRIPLE DIP =

Satisfies three requirements with a single course

EXAMPLES:

**Major, Group, MC (PSY)
PSY 380 = Major, SSC (>2) and IP**

**Minor, Group, MC (SPAN)
SPAN 305 = Minor, AL (>1), IC**





Language and/or Math/CIS



CANNOT "DOUBLE DIP" B.A./B.S. COURSES with GROUPS

Bachelor of Arts (B.A.)

Bachelor of Science (B.S.)

2 years of a college-level second language

1 year of college-level math/CIS

(or equivalent proficiency)

(or equivalent proficiency)

Exceptions for Architecture, Music, and Education





Cannot use B.A./B.S. Courses on Groups

If earning B.A.
EXAMPLE

Cannot use SPAN 201,
202, 203 (218, 228)
on AL if using for B.A.

CAN use 300-level SPAN on AL

If earning B.S.
(many possible combinations)

EXAMPLE

Cannot use
MATH 105, 106, 107 on SCI
if using for B.S.

CAN use MATH/CIS courses taken in
addition to B.S. for SCI (>4)

**NOTE! MATH 111, 112 (>5) DO NOT
COUNT on SCI – B.S. ONLY**





Math/CIS – Regression*/Duplication

101

MUST be in sequence*

In any order

Math 111

Math 243, 105, 106, 107

112

CIS 105, 122, 111

241

251/246

242

252/247

If moving back to sequence courses then must start at MATH 111

No credit for taking same content under different numbers

211, 212, 213 for EdF Majors – only the full sequence counts for B.S./partial OK on >3

1 year of college-level math/CIS = Bachelor of Science (B.S.)

NO

Group Requirements

These are key guidelines for accurate advising!

GUIDELINES: All students must complete courses in Arts & Letters, Social Science, and Science. Each group must include:

- (1) 15 credits in approved group-satisfying courses
- (2) At least two courses with the same subject code
- (3) At least one course with a different subject code

MUS/MUJ are the same subject code for Groups

PLEASE NOTE:

You may use only three courses with the same subject code to satisfy the TOTAL 45-credit requirement.

You may use only one course in your first major to satisfy group requirements.

Courses used to satisfy the BA Language requirement or the BS Math/CIS requirement may not also be used to satisfy group requirements.

This is a **COMMON MISTAKE!** CANNOT use more than 3 courses from the same subject code TOTAL across all three groups.



DECLARING B.A. or B.S.

Students can declare B.A. or B.S. on DuckWeb in Student Menu, General Information

Encourage your students to declare their degree as early as possible!

NOTE! Degree Guide will say “NO” on Groups even if all are complete when the BA or BS has not yet been declared.





B.A. for Intl Students (non-native English)

1. If high school/secondary was taught in native language, student submits transcript to Registrar (conferred w/ WR 121 and 122/123 completion).
2. If high school/secondary instruction was in English, student must demonstrate native language proficiency via placement testing, department or independent evaluator confirmation. Verification sent to Dean of Humanities (Karen Ford).





B.A. for Intl Students (non-native English)

If student's proficiency is in a language not offered by UO:

1. Contact Testing Center and Yamada Language Center to locate possible contact for testing or evaluation.
2. Testing available in over 50 languages through NYU <http://www.scps.nyu.edu/academics/departments/ali/language-testing.html>.





Double Major – B.A. and B.S.

1. Student must select first (primary) & second (secondary) majors.
2. If a major is only B.A., student earns a B.A. in both majors (completes 2nd language) --
EXAMPLE B.A. in English and Biology.
3. Can earn B.S. and B.A. (concurrent degrees)
BUT this requires 36 additional credits
EXAMPLE B.S. Bio & B.A. Eng = 216 credits



DEGREE GUIDE

redits ▾

Millennium, Bob Y
Bachelor of Science

Prepared On 05/03/2016 09:31 AM

Audit Results

Course History

Request Audit

Update the Degree Guide prior to any advising sessions

Open All Sections

Close All Sections

 Printer Friendly

Catalog Term: Fall 2012

Last Complete Term: Fall 1989

Major(s): Business Administration

Minors(s): Economics

Advisor(s): Brian Lowery, Registrar's Office

REQUIREMENTS ARE LISTED BELOW



About Your Degree Guide

This report summarizes your academic progress toward satisfaction of University requirements. Recent grade changes, major changes, degree changes, etc. may not be reflected. Please note date and time of degree guide above.

The 180 Credits, 62 Upper Division, Residency, 168 ABCDP*, 45 ABCD and other credit requirements do not count in progress courses in the number of credits earned.

A "LEGEND" is located at the end of the degree guide.

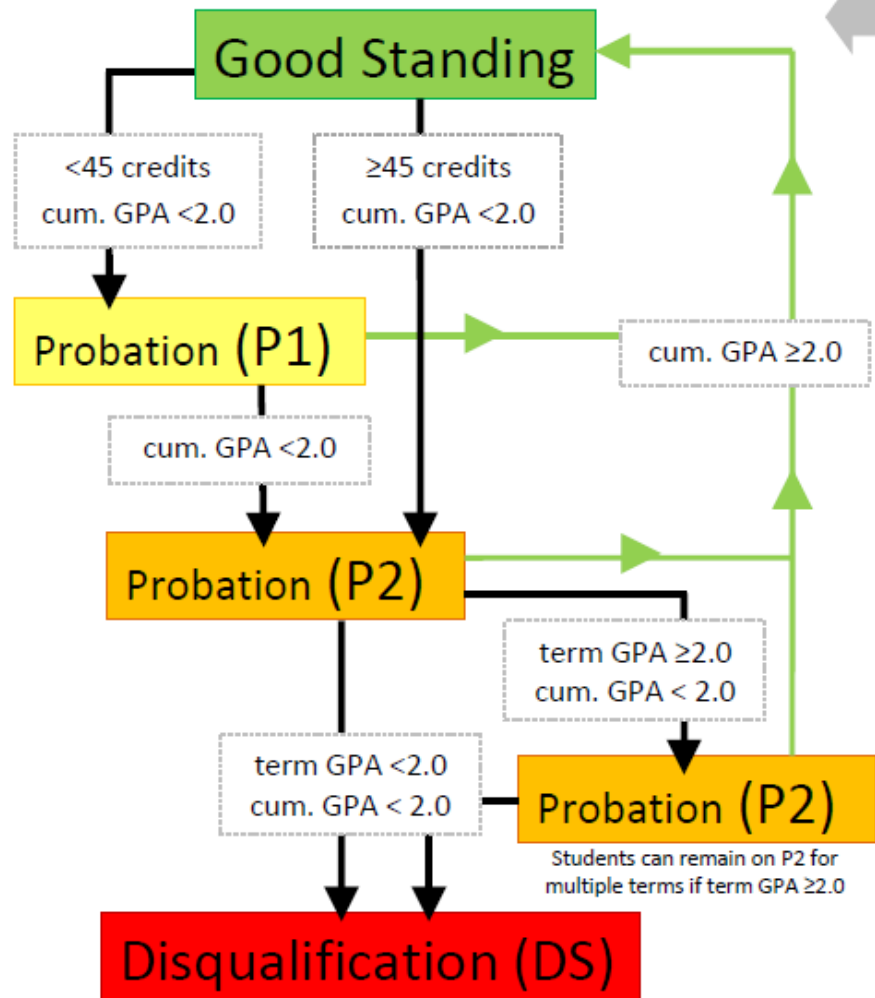


Academic Standing

1. **Students are required to maintain a cumulative GPA of 2.0.**
2. **Students who earn TERM and/or CUMULATIVE GPAS below 2.0 will trigger academic standing notices via email (disqualified students receive email and mailed letter).**

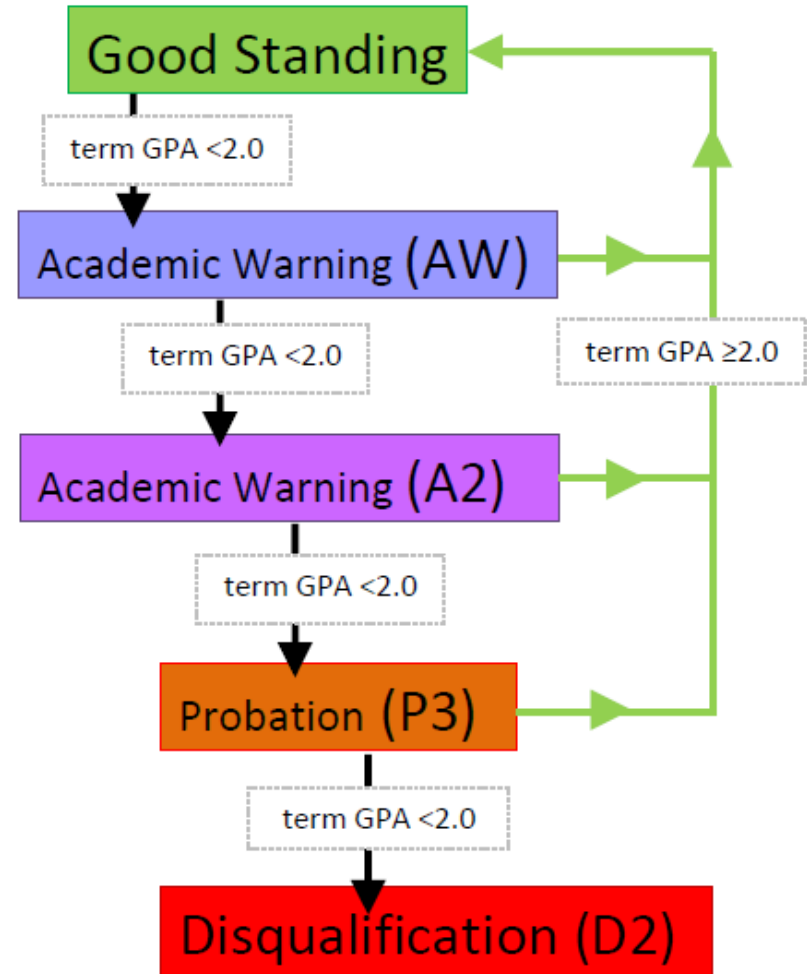


Cumulative GPA below 2.0



Cumulative GPA above 2.0

If multiple terms of no progress bring a student's cum. GPA below 2.0, they will be held to the original policy's terms.



* Admissions can admit students on P2 status.



Academic Standing – Cumulative below 2.0

< 45 credits	Cum. GPA < 2.0	Probation (P1)
≥45 credits <u>or</u> P1 student	Cum. GPA < 2.0	Probation (P2)
P2 student	Term GPA < 2.0	DISQUALIFIED (DS)
P2 student	Term GPA ≥ 2.0	Stays on P2 until Cum. GPA = 2.0 or better



Term	Subject	Course	Title	Grade	Credit Hours	Quality Points	
08F	BA	101	Intro to Business	C	4.00	8.00	
08F	GEOL	306	Volcanoes & Earthquake	F	4.00	.00	
08F	SPAN	101	1st Year Spanish	C+	5.00	11.50	
08F	WR	121	College Composi I	B	4.00	12.00	
			Attempted Hr.	Earned Hr.	GPA Hours	Quality Points	GPA
Current Term			17.00	13.00	17.00	31.50	1.85
Cumulative			17.00	13.00	17.00	31.50	1.85
End-of-term Academic Standing			Probation (P1)				
09W	BA	215	Lang of Bus Decision	N	4.00	.00	
09W	SPAN	102	1st Year Spanish	C-	5.00	8.50	
09W	WR	122	College Composition II	B-	4.00	10.80	
			Attempted Hr.	Earned Hr.	GPA Hours	Quality Points	GPA
Current Term			13.00	9.00	9.00	19.30	2.14
Cumulative			30.00	22.00	26.00	50.80	1.95
End-of-term Academic Standing			Probation (P2)				
09S	SOC	204	Intro Sociology	C	4.00	8.00	
09S	SPAN	103	1st Year Spanish	D	.00	5.00	
09S	WGS	101	Women/Differ/Power	B+	4.00	13.20	
			Attempted Hr.	Earned Hr.	GPA Hours	Quality Points	GPA
Current Term			13.00	8.00	13.00	26.20	2.01
Cumulative			43.00	30.00	39.00	77.00	1.97
End-of-term Academic Standing			Probation (P2)				

			Cumulative	16.00	8.00	8.00	25.20	3.15
End-of-term Academic Standing			Good Standing					
11F	BI	213	Gen Biol III: Populat		F	4.00	.00	
11F	FHS	407	Sem Peer Health Ed I		F	4.00	.00	
11F	HPHY	321	Human Anatomy I		F	5.00	.00	
			Attempted Hr.	Earned Hr.	GPA Hours	Quality Points	GPA	
Current Term			13.00	.00	13.00	.00	.00	
Cumulative			29.00	8.00	21.00	25.20	1.20	
End-of-term Academic Standing			Probation (P2)					
12S	BI	213	Gen Biol III: Populat		C	4.00	8.00	
12S	WR	122	College Composition II		A-	4.00	14.80	
			Attempted Hr.	Earned Hr.	GPA Hours	Quality Points	GPA	
Current Term			8.00	8.00	8.00	22.80	2.85	
Cumulative			37.00	16.00	29.00	48.00	1.65	
End-of-term Academic Standing			Probation (P2)					
12U	PHYS	201	General Physics		N	4.00	.00	
12U	PHYS	202	General Physics		W	4.00	.00	
			Attempted Hr.	Earned Hr.	GPA Hours	Quality Points	GPA	
Current Term			8.00	.00	.00	.00	.00	
Cumulative			45.00	16.00	29.00	48.00	1.65	
End-of-term Academic Standing			Disqualification (DS)					



Academic Standing – Cumulative at or above 2.0

Term GPA < 2.0	Cum. GPA \geq 2.0	Academic Warning (AW) (not on <u>official</u> transcript)
2 nd consecutive term GPA < 2.0	Cum. GPA \geq 2.0	Academic Warning (A2) (not on <u>official</u> transcript)
3 rd consecutive term GPA < 2.0	Cum. GPA \geq 2.0	Probation (P3)
4 th consecutive term GPA < 2.0	Cum. GPA \geq 2.0	DISQUALIFIED (D2)



End-of-term Academic Standing Academic Warning (AW)

14S	GEOG	141	Natural Environment	B+	4.00	13.20		
14S	REL	223	Intro to the Bible II	F	4.00	.00		
14S	SOC	207	Social Inequality	W	4.00	.00		
				Attempted Hr.	Earned Hr.	GPA Hours	Quality Points	GPA
Current Term				12.00	4.00	8.00	13.20	1.65
Cumulative				94.00	40.00	48.00	116.00	2.41

End-of-term Academic Standing Academic Warning (A2)

14F	FHS	213	Issues Children & Fam	W	4.00	.00		
14F	REL	101	World Relig: Asian	W	4.00	.00		
14F	SOC	207	Social Inequality	W	4.00	.00		
				Attempted Hr.	Earned Hr.	GPA Hours	Quality Points	GPA
Current Term				12.00	.00	.00	.00	.00
Cumulative				100.00	40.00	48.00	116.00	2.41

End-of-term Academic Standing Probation (P3)

15W	FHS	213	Issues Children & Fam	W	4.00	.00		
15W	SOC	207	Social Inequality	W	4.00	.00		
				Attempted Hr.	Earned Hr.	GPA Hours	Quality Points	GPA
Current Term				8.00	.00	.00	.00	.00
Cumulative				114.00	40.00	48.00	116.00	2.41

End-of-term Academic Standing Disqualification (D2)

12W	CRWR	230	Intro to Poetry Writ	W	4.00	.00
12W	ENG	108	World Literature	W	4.00	.00
12W	ENG	399	Sp St Sex/Gnder/Sci Fi	W	4.00	.00
12W	HUM	102	Humanities II	W	4.00	.00
12W	PEMB	211	Hatha Yoga I	W*	1.00	.00

			Attempted Hr.	Earned Hr.	GPA Hours	Quality Points	GPA
Current Term			17.00	.00	.00	.00	.00
Cumulative			106.00	44.00	56.00	121.60	2.17

End-of-term Academic Standing Academic Warning (A2)

12S	LING	150	Structur English Words	N	4.00	.00
12S	RUSS	334	Dostoevsky	Y	4.00	.00

			Attempted Hr.	Earned Hr.	GPA Hours	Quality Points	GPA
Current Term			8.00	.00	.00	.00	.00
Cumulative			114.00	44.00	56.00	121.60	2.17

End-of-term Academic Standing Probation (P3)

12U	LAT	101	Basic Latin	C-	5.00	8.50
12U	LAT	102	Basic Latin	F	5.00	.00
12U	LAT	103	Basic Latin	W	5.00	.00

			Attempted Hr.	Earned Hr.	GPA Hours	Quality Points	GPA
Current Term			15.00	5.00	10.00	8.50	.85
Cumulative			129.00	49.00	66.00	130.10	1.97

End-of-term Academic Standing Disqualification (D2)



Petitions – Which Committee?

REGISTRAR (ARC)	ACADEMIC ADVISING (SRC)
Adding courses past the deadline (any term)	Academic reinstatement
Change in grading option past the deadline (current term – weeks 8-10)	Cancellation of disqualification
Change in grading option when it affects 168ABCDP*/45ABCD credits for graduation (final term for graduation)	Cancellation of academic probation (ONLY IN CASES OF ADMIN ERROR)
Credit by exam	Retroactive complete or selective withdrawal for a “W” (term has ended)
Receive credit twice for the same course	Retroactive change in grading option (term has ended)
Refunds for <u>individual courses (NOT completely withdrawn)</u> in a term (current or retroactive)	Retroactive contested grades (term has ended)
Register for more than 24 credits/more than 18 credits on probation (any term)**	
Reduction in graduation requirements	
Repeat a non-repeatable course	
Selective withdrawal past the deadline (current term – weeks 8-10)	





Petitions – Which Committee? continued...

**Students wishing to register for 22-24 credits must get approval from their advisor. Major department advisors can submit approval for 22-24 credits via advisor access on DuckWeb.

Students wishing to register for 16-18 credits on academic probation must get a signature from an advisor in the Office of Academic Advising.

Tuition Refund Committee (Academic Advising)

Reviews petitions for refund on complete withdrawal from the term (current or retroactive).





Repeating a Course

1. **Prior to Fall 2016:** All grades averaged into the GPA.
2. **Effective Fall 2016**
 1. Students may not repeat courses completed with a C or Pass (except by petition to ARC).
 2. All grades appear on transcript. Only the second graded attempt of the repeated course is calculated into cumulative GPA.
 3. Credit for non-repeatable courses is only given once.
3. **Effective Fall 2019:**
 1. All grades averaged into the GPA.
 2. Students can attempt a course a maximum of three times (this includes marks of I, N, W, X, Y).





Intl Students – Curricular Practical Training (CPT)

<http://iss.uoregon.edu/employment>

1. Work authorization through ISSS for F-1 visa students to get paid internship/practicum credit.
2. Internship/practicum must satisfy degree requirement or elective credit towards degree. Student must enroll in credit bearing internship/practicum course.
3. CPT form must be approved by department advisor or internship instructor for student to receive ISSS approval.





UNIVERSITY
OF OREGON



...ask questions anytime

Lori Manson

346-3211

loric@uoregon.edu

GO DUCKS!